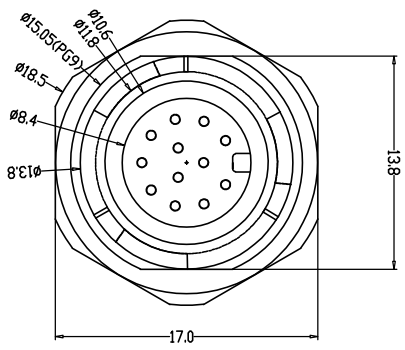
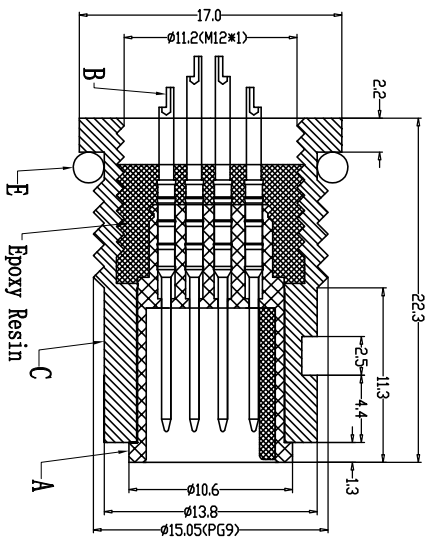
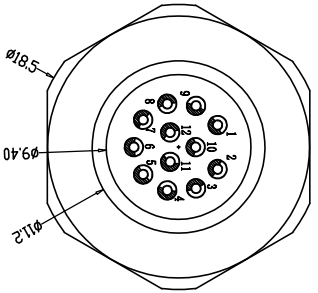
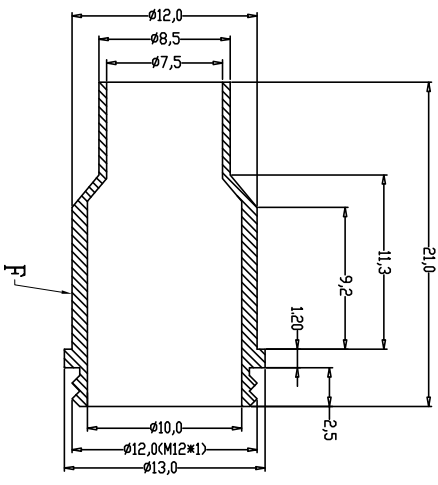
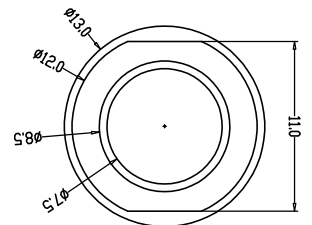
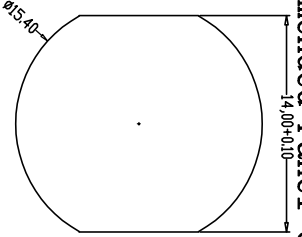


Recommended Panel Cut-out



	Engagement force	≤50N	Rated voltage	30V
	Disengagement force	≥10N	Rated current	1.5A
	Mechanical lifespan	≥500	Insulation resistance	≥1000M Ω
	IP rating	IP67/IP68	Contact resistance	≤10m Ω
	Flammability	UL94 V-0	Operation Temperature	-40° C~105° C

PARTS	MATERIALS	TREATMENT	AMOUNT
A HOUSING	PA66+GF	SPECIFY COLOR	1
B CONTACT	BRASS	GOLD PLATED	9~17
C OUTER CONTACT	BRASS	NICKEL PLATED	1
D NUT	BRASS	NICKEL PLATED	1
E O-RING	EPDM	SPECIFY COLOR	1

东莞市昌骏电子有限公司
Dongguan Changjun Electronics Co., LTD

TITLE:		M12防水9~17芯端子头 前体侧面板式PG9 SM17T连接器	
PART NO:		CP-M120466	
SHEET:		1 / 1	
SCALE:		1 : 1	
DRAWING NO.:		CP-M120466	
UNIT:		mm	
SIZE:		A4	
REV:		A/0	
DATE:		2024-09-09	

DRAWN:	Xie Wenjun	CHECK:	Long Jichang
--------	------------	--------	--------------