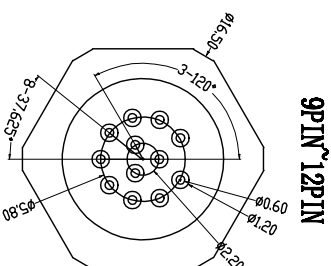
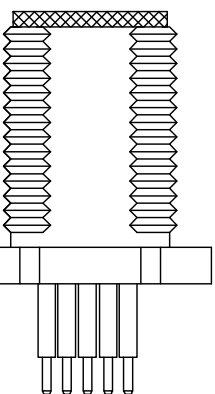
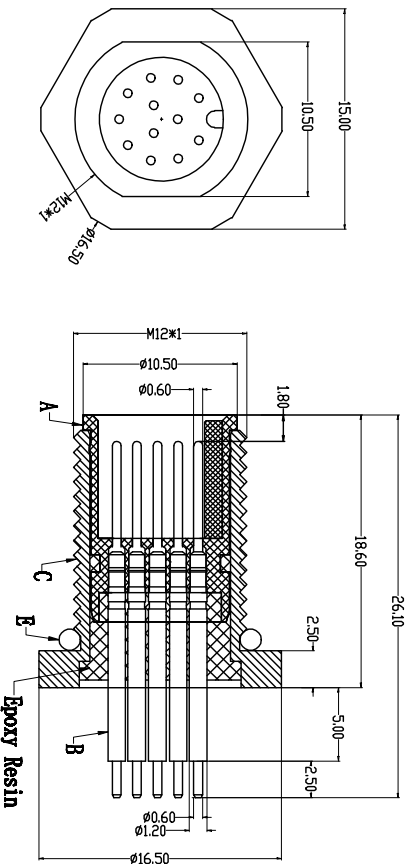
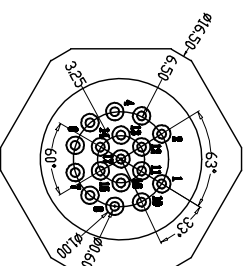
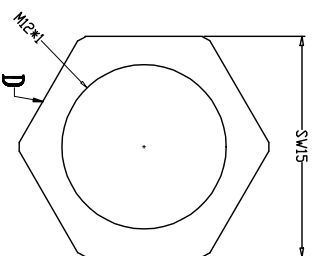
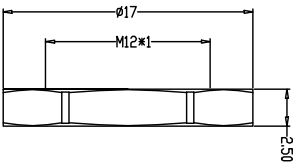
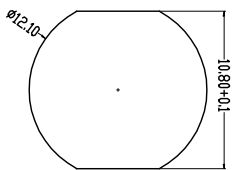


Recommended Panel Cut-out



由 Autodesk 教育版产品制作

PARTS	MATERIALS	TREATMENT	AMOUNT
A HOUSING	PAGE6+GF	GOLD PLATED	1
B CONTACT	BRASS	GOLD PLATED	9~17
C OUTER CONTACT	BRASS	NICKEL PLATED	1
D NUT	BRASS	NICKEL PLATED	1
E O-RING	EPDM	BLACK	1
F			

Engagement force	Rated voltage	Rated current	Rated voltage
≤50N	30V	1.5A	30V
Disengagement force	Rated current	Rated voltage	Rated current
≥10N	≥500	≥1000mA	1.5A
Mechanical lifespan	Insulation resistance	Contact resistance	Operation Temperature
≥500	≥1000MΩ	≤10mΩ	-40° C~105° C
IP rating	Contact resistance	Operation Temperature	
IP67/IP68			
Flammability			
UL94 V-0			

Dongguan Changjun Electronics Co., Ltd  
东莞市昌骏电子有限公司

TITLE: M12防水17针板端公头 前视图尺寸12 5151-28.1L

PART NO: DRIVING NO.: CP-1120049

SCALE: 1:1

SIZE: REV A/0

DATE: 2022-01-05

DRAWN: Xie Kunjun CHECKED: Long Jichang