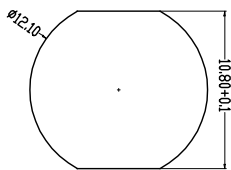
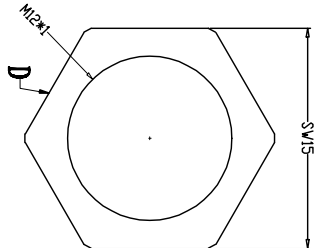
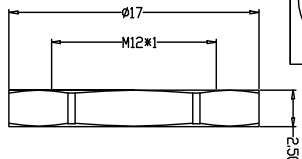
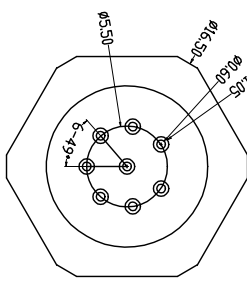


Recommended Panel Cut-out

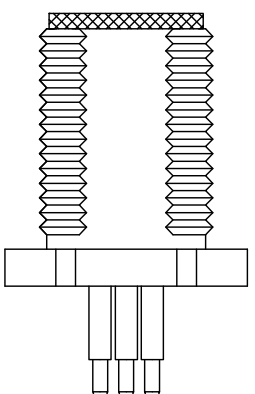
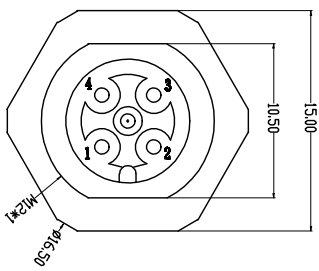
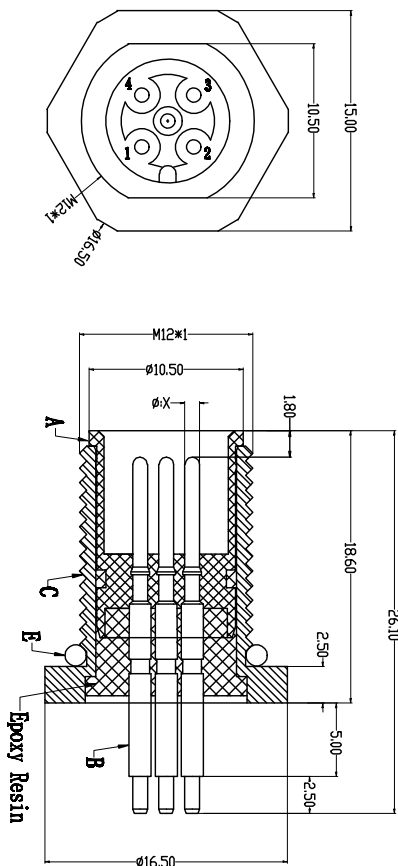
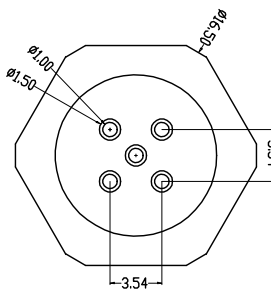
		1			2			3		
A	X 值	2pin	3pin	4pin	5pin	6pin	7pin	8pin		
A-one	图形									
B	B-one 图形									
C	C 图形									



6~8PIN



2~5PIN



		1			2			3		
H		1	2	3	4	5	6	7	8	
G	Engagement force	≤50N								
	Disengagement force	≥5N								
	Mechanical lifespan	≥500								
	IP rating	IP67/IP68								
	Flammability	UL94 V-0								

PARTS	MATERIALS	TREATMENT	AMOUNT
A HOUSING	PA66+GF	GOLD PLATED	1
B CONTACT	BRASS	NICKEL PLATED	2*8
C OUTER CONTACT	BRASS	NICKEL PLATED	1
D NUT	BRASS	NICKEL PLATED	1
E O-RING	EPTM	BLACK	1

Dongguan Changjun Electronics Co., Ltd
东莞市昌骏电子有限公司

TITLE: H12板及2~8pin板公头 前板面板式H12 5715T-2A.LL

PART NO: 112板及2~8pin板公头

DRAWING NO.: CP-H120050

DATE: 2022-01-05

SCALE: 1:1

UNIT: mm

SIZE: REV A/0

DRAWN: Xie Kunjun

CHECK: Long Jichang

DATE: 2022-01-05