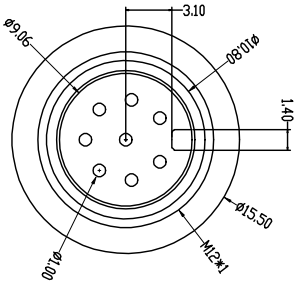
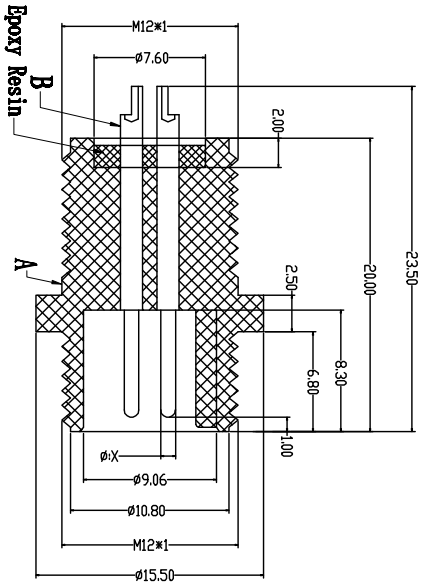
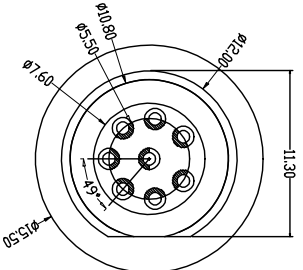
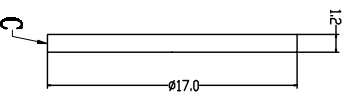
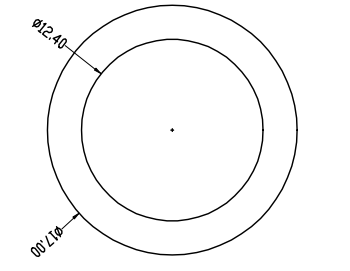
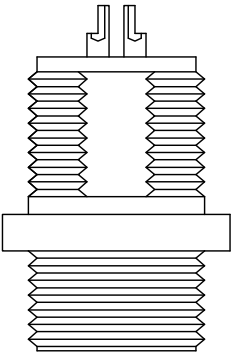
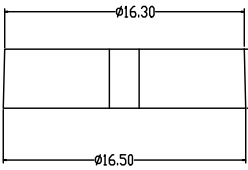
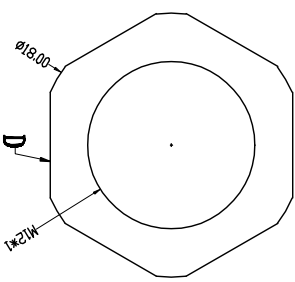
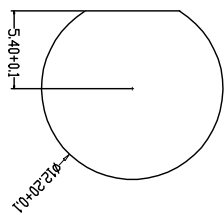


A		1	2	3	4	5	6	7	8
pin位	2pin	3pin	4pin	5pin	6pin	7pin	8pin		
X 值	1.50	1.00	1.00	1.00	1.00	1.00	1.00		
图形									

Recommended Panel Cut-out



G		H	
Engagement force	≤50N	Rated voltage	Rated current
Disengagement force	≥5N	Rated current	≥500
Mechanical lifespan	≥500	Insulation resistance	≥1000MΩ
IP rating	IP67/IP68	Contact resistance	≤10mΩ
Flammability	UL94 V-0	Operation Temperature	-40° C~105° C

PARTS	MATERIALS	TREATMENT	AMOUNT
A	HOUSING PA66+GF	BLACK	1
B	CONTACT BRASS	GOLD PLATED	2*8
C	SHIM SILICA GEL	BLACK	1
D	NUT PA66+GF	BLACK	1

Dongguan Changjun Electronics Co., LTD
东莞市昌骏电子有限公司

TOLERANCE	TITLE	PART NO.	DRAWING NO.
±0.05 ±0.10 ±0.20 ±0.50	M12防水密封插头 后侧面板式-CJ款	CJ-M12T1(7)-30H-CJ	CP-M120112
±1°	SCALE: 1:1	UNIT: mm	SIZE: REV A/0
	DATE: 2022-01-05		