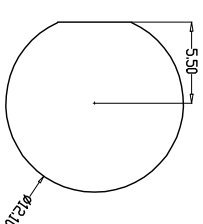
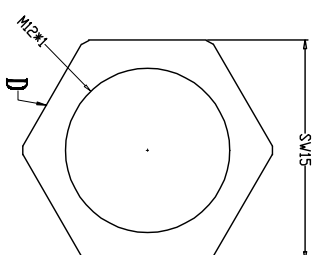
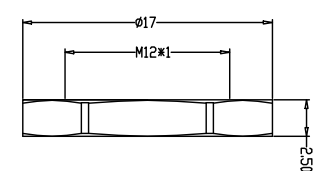
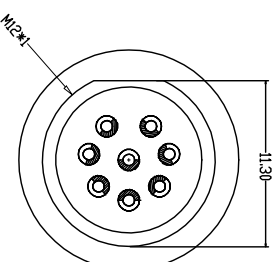
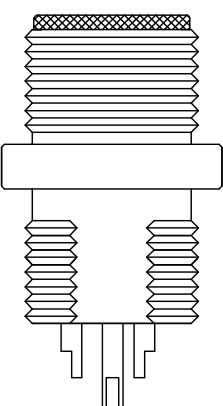
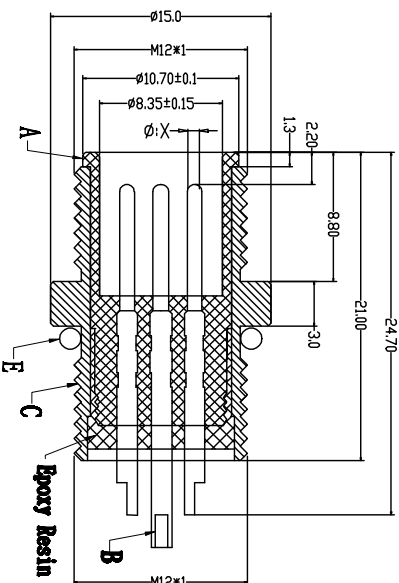
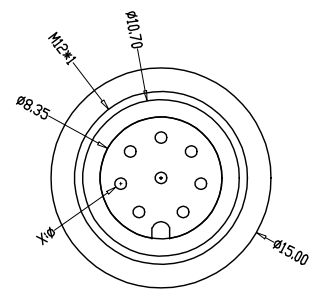


A	1							
	pin位	2pin	3pin	4pin	5pin	6pin	7pin	8pin
X 值	1.00	1.00	1.00	1.00	0.80	0.80	0.80	0.80
A-D型图形								
B-D型图形								
C-D型图形								

Recommended Panel Cut-out



由 Autodesk 教育版产品制作



由 Autodesk 教育版产品制作

G	PARTS		MATERIALS	TREATMENT	AMOUNT
	A	B			
Engagement force	HOUSING	CONTACT	PAGE6+GF BRASS	GOLD PLATED	1 2~8
Disengagement force		OUTER CONTACT	BRASS	NICKEL PLATED	1
Mechanical lifespan		NUT	BRASS	NICKEL PLATED	1
IP rating		O-RING	EPDM	BLACK	1
Flammability					

TOLERANCE		TITLE:	
.xxx	±0.05	H12防水型接插公头 后面板式H12 F15T	
.xx	±0.10	PART NO.:	
.x	±0.20	0-连接器规格书	
ANGLES	±1°	DRAWING NO.:	
		GP-H120034	
		SHEET: 1 / 1	
		SCALE: 1 : 1	
		UNIT: mm	
		SIZE: A4	
		REV: A/0	
		DRAWN: Xie Fenjun	
		CHECK: Long Jichang	
		DATE: 2022-01-05	

Dongguan Changjun Electronics Co., LTD
东莞市昌骏电子有限公司