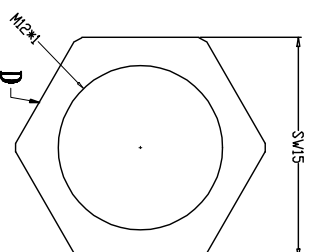
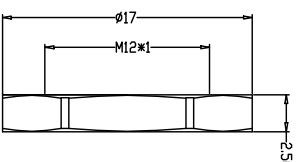
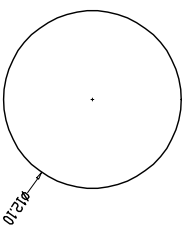
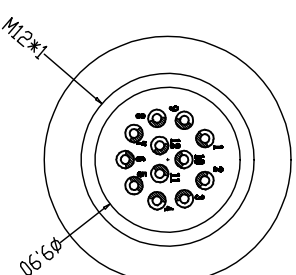
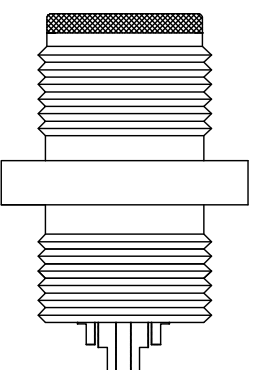
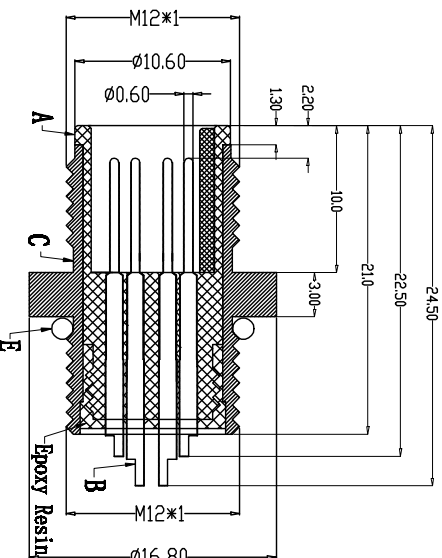
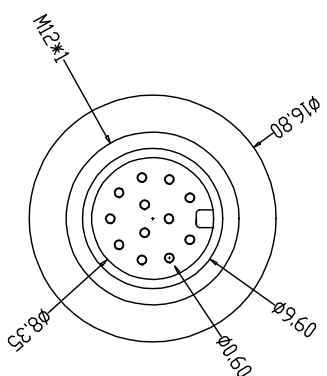


	1	2	3	4	5	6	7	8	
A	9pin	10pin	11pin	12pin	13pin	14pin	15pin	16pin	17pin
B									

Recommended Panel Cut-out



由 Autodesk 教育版产品制作



PARAMETER	VALUE	PARAMETER	VALUE
Engagement force	$\leq 50N$	Rated voltage	30V
Disengagement force	$\geq 10N$	Rated current	1.5A
Mechanical lifespan	$\geq 500$	Insulation resistance	$\geq 1000M\Omega$
IP rating	IP67/IP68	Contact resistance	$\leq 10m\Omega$
Flammability	UL94 V-0	Operation Temperature	$-40^{\circ}C \sim 105^{\circ}C$

PARTS	MATERIALS	TREATMENT	AMOUNT
A HOUSING	PA66+GF	GOLD PLATED	1
B CONTACT	BRASS	GOLD PLATED	9~17
C OUTER CONTACT	BRASS	NICKEL PLATED	1
D NUT	BRASS	NICKEL PLATED	1
E O-RING	EPDM	BLACK	1

Dongguan Changjun Electronics Co., LTD  
东莞市昌骏电子有限公司

TOLERANCE	.xxx ±0.05 .xx ±0.10 .x ±0.20 ANGLES ±1°	TITLE: H38系列17芯接插件 后面板安装型 R16.8
PART NO:	0-connector-17-pin-assembly	DRAWING NO.: CP-H120035
SHEET:	1 / 1	SCALE: 1 : 1
DRAWN:	Xie Renjun	CHECK:
DATE:	2022-01-05	DATE:

由 Autodesk 教育版产品制作