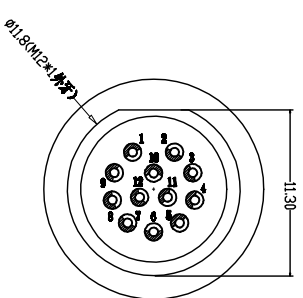
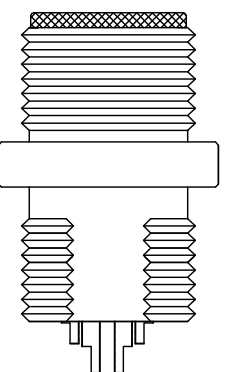
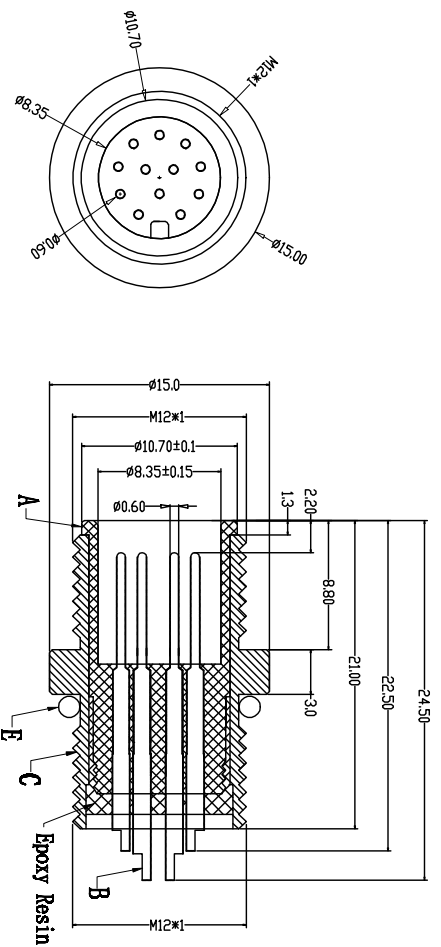
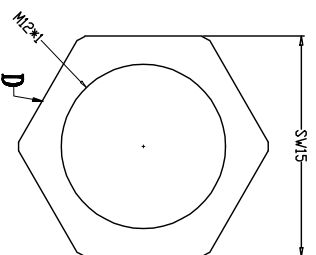
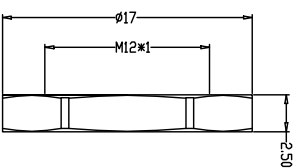
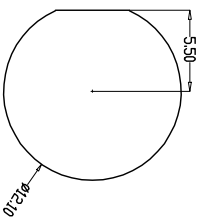


Recommended Panel Cut-out



由 Autodesk 教育版产品制作

PARAMETER	REQUIREMENT	REQUIREMENT	REQUIREMENT	REQUIREMENT	REQUIREMENT	REQUIREMENT	REQUIREMENT	REQUIREMENT	REQUIREMENT
Engagement force	≤50N	Rated voltage	30V	Rated current	1.5A	Insulation resistance	≥1000MΩ	Contact resistance	≤10mΩ
Disengagement force	≥10N	Rated current	30V	Rated voltage	30V	Insulation resistance	≥1000MΩ	Contact resistance	≤10mΩ
Mechanical lifespan	≥500	Insulation resistance	≥1000MΩ	Rated current	1.5A	Contact resistance	≤10mΩ	Operation Temperature	-40° C~105° C
IP rating	IP67/IP68	Contact resistance	≤10mΩ	Operation Temperature	-40° C~105° C	Flammability	UL94 V-0		

1 2 3 4 5 6 7 8

由 Autodesk 教育版产品制作

由 Autodesk 教育版产品制作

Dongguan Changjun Electronics Co., LTD
东莞市昌骏电子有限公司

TITLE: H1.8mm 17Pin 连接器 后面板式 12 Pin

PART NO: 0-connector-17-12-pin-12-pin

SCALE: 1:1

UNIT: mm

SIZE: A4

REV: A/0

DATE: 2022-01-05

DRAWN: Xie Kunjun

CHECK: Long Jibang

1 2 3 4 5 6 7 8