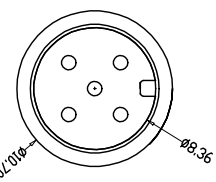
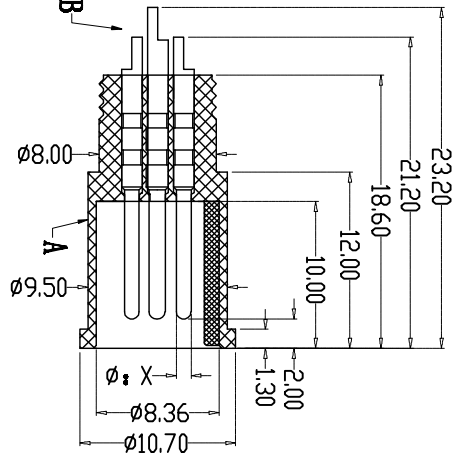
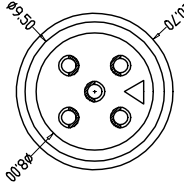
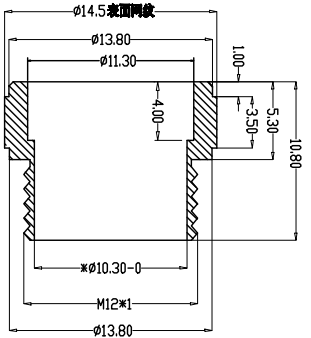
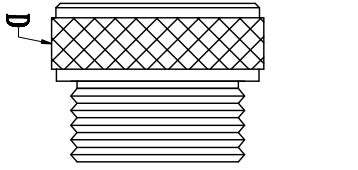
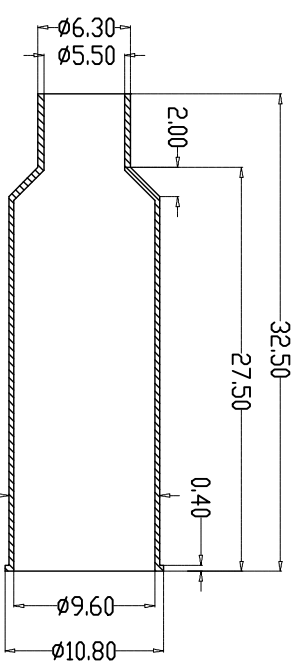
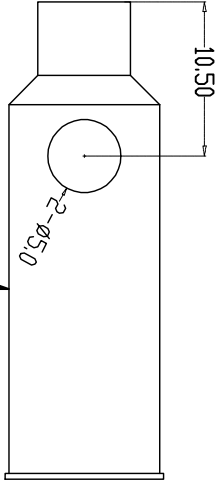


		1			2			3			
pin位	2pin	3pin	4pin	5pin	6pin	7pin	8pin				
A	X 值	1.00	1.00	1.00	1.00	0.80	0.80	0.80			
A-000E	图形										
B	B-000E										
C	D-000E										



由 Autodesk 教育版产品制作

由 Autodesk 教育版产品制作

		1			2			3			6			7			8		
Engagement force	≤50N	Rated voltage	≤1000V	Rated current	≤10A	Contact resistance	≤10mΩ	Operation Temperature	-40° C~105° C										
Disengagement force	≥5N	Rated current	≤500mA	Insulation resistance	≥1000MΩ	Flammability	UL94 V-0												
Mechanical lifespan	≥500	Insulation resistance	≥1000MΩ	IP rating	IP67/IP68														
IP rating	IP67/IP68	Contact resistance	≤10mΩ																
Flammability	UL94 V-0	Operation Temperature	-40° C~105° C																

PARTS	MATERIALS	TREATMENT	AMOUNT
A HOUSING	PA66+GF	GOLD PLATED	1
B CONTACT	BRASS	NICKEL PLATED	2*8
C SHIELD	BRASS	NICKEL PLATED	1
D NUT	BRASS	NICKEL PLATED	1

Dongguan Changjun Electronics Co., LTD		东莞市昌骏电子有限公司	
TITLE: M12防水2芯连接器公头+2芯5.0V压接插管+10.0V压接插管		DRAWING NO.: CJ-M120187	
PART NO: CJ-M12(3)A-22		SCALE: 1:1	
SHEET: 1/1		UNITS: mm	
DRAWN: Xie Wenjun		CHECK: Long Jichang	
DATE: 2022-06-24		REV: A/0	