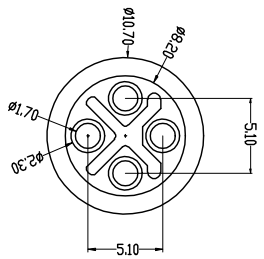
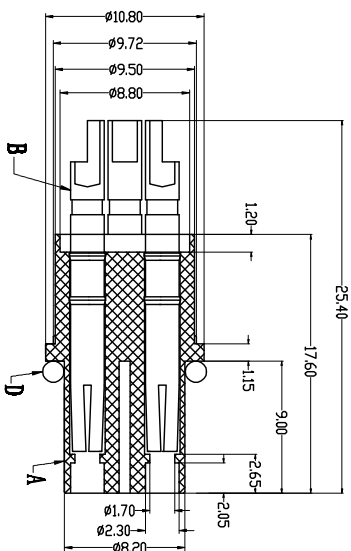
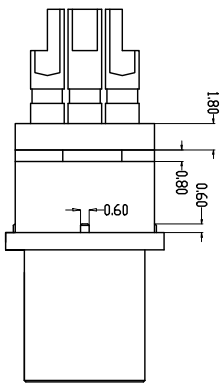
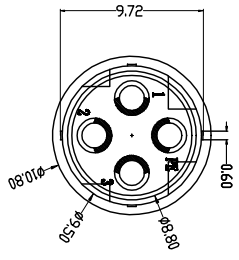
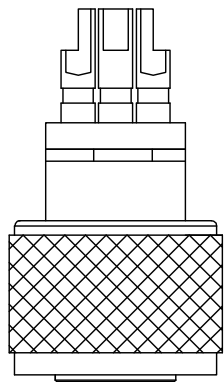
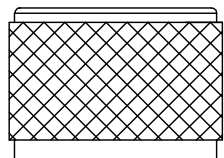
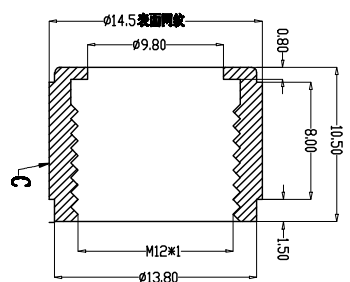


A	pin位	1	2	3	6	7	8
	图形						



由 Autodesk 教育版产品制作

由 Autodesk 教育版产品制作

G	Engagement force	≤50N	Rated voltage	630V
	Disengagement force	≥10N	Rated current	12A
H	Mechanical lifespan	≥500	Insulation resistance	≥1000V/Ω
	IP rating	IP67/IP68	Contact resistance	≤10mΩ
I	Flammability	UL94 V-0	Operation Temperature	-40° C~105° C

PARTS		MATERIALS		TREATMENT		AMOUNT	
A	HOUSING	PA66+GF		GOLD PLATED		3~4	
B	CONTACT	BRASS		NICKEL PLATED		1	
C	NUF	BRASS		BLACK		1	
D	0-RING	EPDM					

**Dongguan Changjun Electronics Co., LTD**  
**东莞市昌骏电子有限公司**

TOLERANCE	TITLE: M12防水4Pin接插件S-ODR-10.5L圆形插座	
±0.05	PART NO:	DRAWING NO.:
±0.10	CF-M12(S)-03-101	CF-M120155
±0.20	SCALE: 1:1	UNIT: mm
±0.50	SHEET: 1/1	SIZE: A4
ANGLES ±1°	DRAWN: Xie Tengjun	CHECK: Long Jichang
	DATE: 2022-01-05	