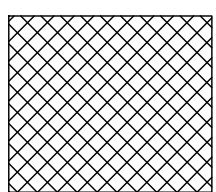
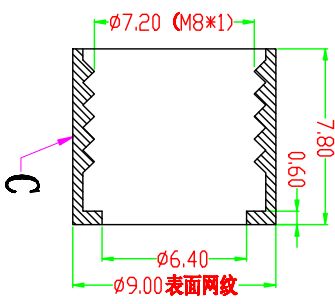
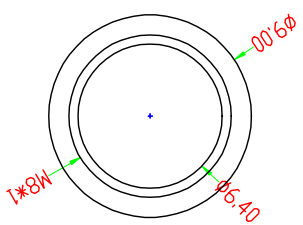
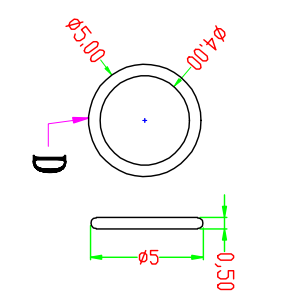
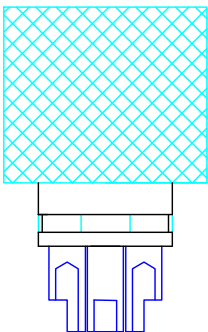
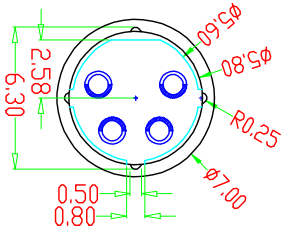
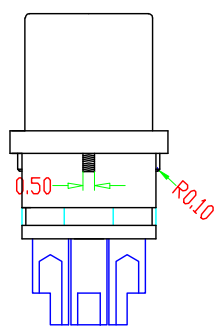
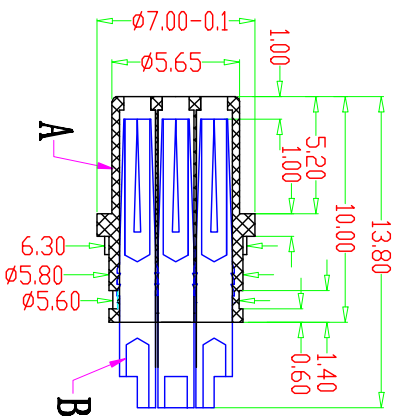
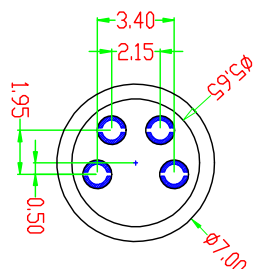


图形	1	2	3	4	5	6	7	8								
	2pin	3pin	4pin	5pin	6pin	8pin										
项目	防水插头		寿命力	500次以上	单PIN插拔力	0.25KG±0.15	耐电压	500V AC	绝缘阻抗	≥1000 MΩ	接触阻抗	≤20 mΩ	额定电流	2~5pin 4A 6~8pin 2A	额定电压	60V DC 30V DC



适用环境温度: -40° 至85°
防护等级: IP67.
阻燃等级: 94V-0.

项目	零件名称	零件材质	处理	数量
A	绝缘体	TPU胶料	注塑要求颜色	1
B	PIN 针	磷铜	镀金	2~8
C	五金螺丝	H59黄铜	镀镍	1
D	防水圈	硅胶	红色	1

东莞市昌骏电子有限公司

TITLE:	M8防水2~8P线端母头+7.8L网纹螺母		
PART NO.:	CJ-M8CXB (2~8)-F01	DRAWING NO.:	CP-137
SHEET:	1 / 1	SCALE:	4 : 1
UNIT:	mm	SIZE:	REV A/0
APRD:	唐卓杰	CHECK:	龙吉昌
DRAWN:	2021-03-06		