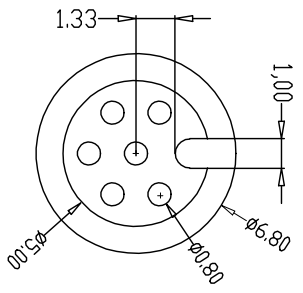
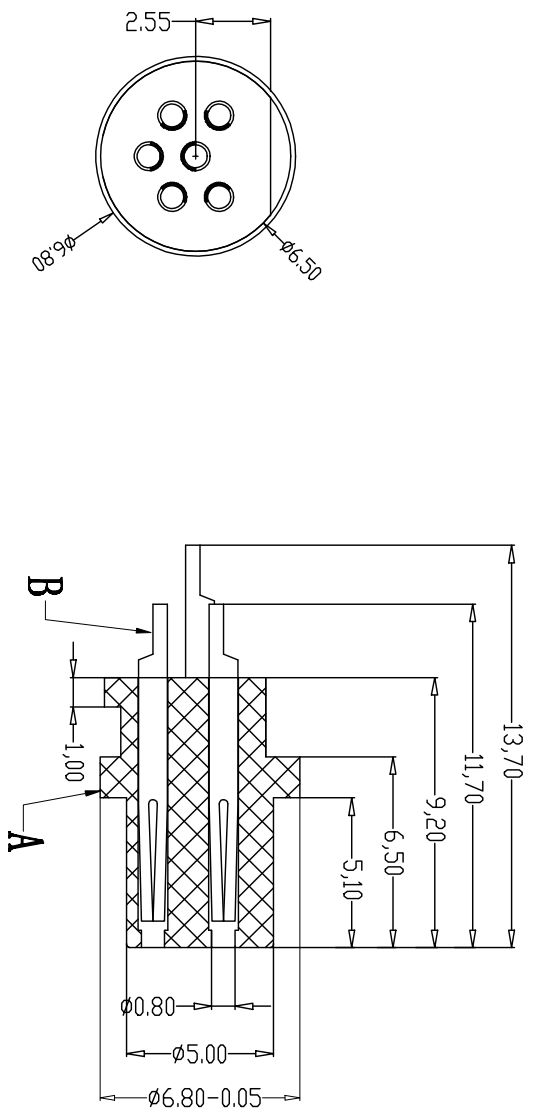
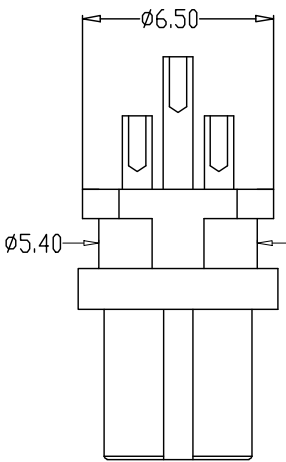


A	1	2	3	4	
B	2pin RED	3pin YELLOW	4pin BLUE	5pin GREEN	6pin BLACK



由 Autodesk 教育版产品制作

由 Autodesk 教育版产品制作

PARTS	MATERIALS	TREATMENT	AMOUNT
A HOUSING	PBT+GF	SPECIFY COLOR	1
B CONTACT	BRONZE	GOLD PLATED	2*6
C			
D			
E			
F			

TOLERANCE .xxx ±0.05 .xx ±0.10 .x ±0.20 x ±0.50 ANGLE ± 1°		TITLE: 针型 mini 贴片 2 针插接母头	
PART NO.: CJ-W7M1 (2*6)-F01		DRAWING NO.: CJ-W7M10003	
SHEET: 1 / 1 SCALE: 1 : 1		UNIT: mm SIZE: REV A/0	
DRAWN: Xie Wenjun		CHECKS: Long Jichang DATE: 2022-09-05	