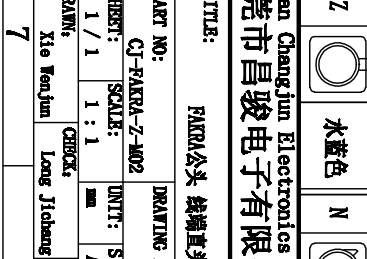
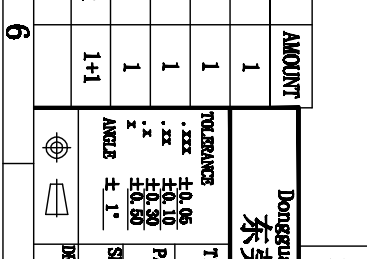
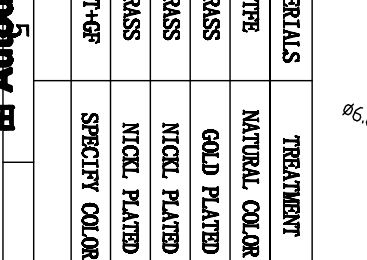
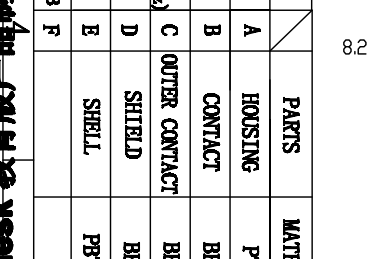
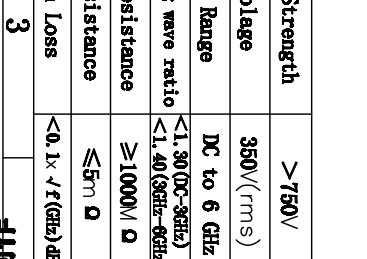
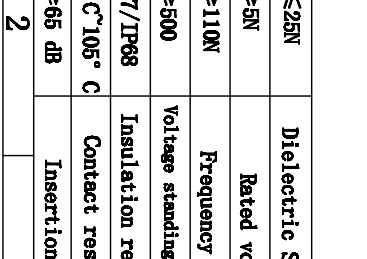
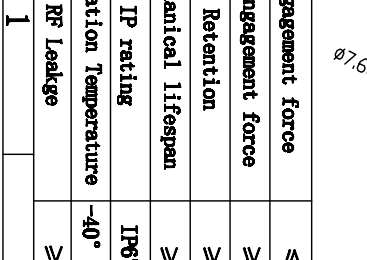
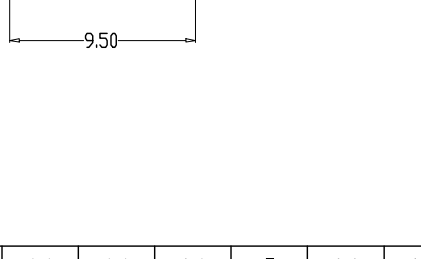
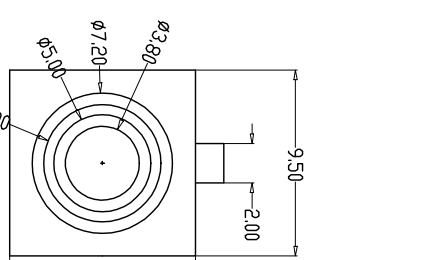
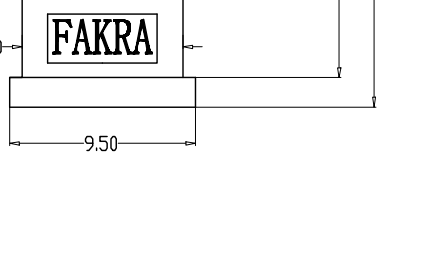
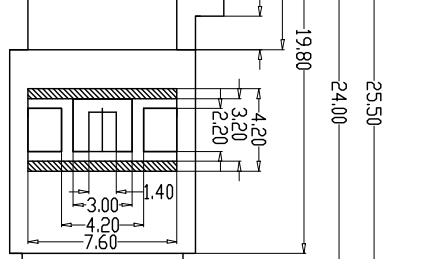
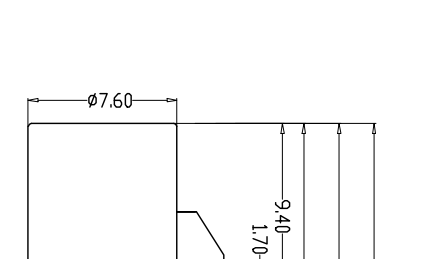
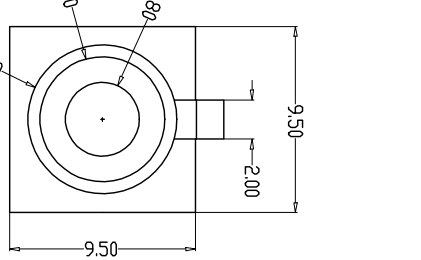
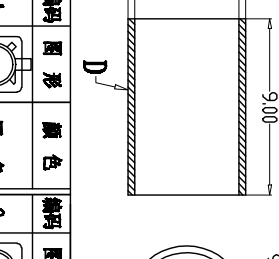
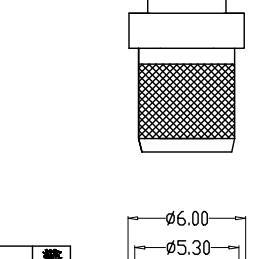
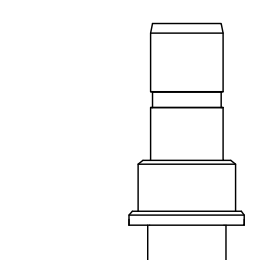
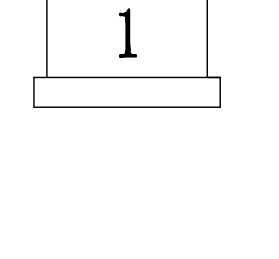
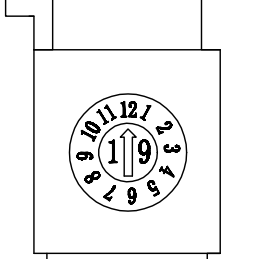
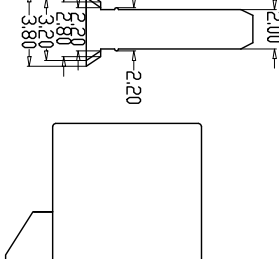
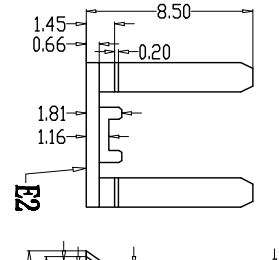
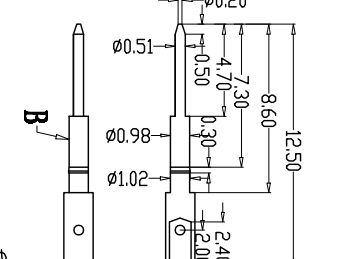
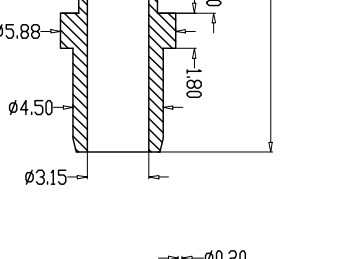
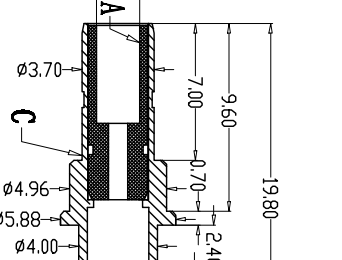
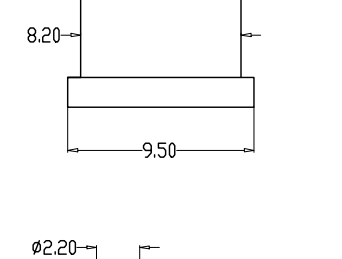
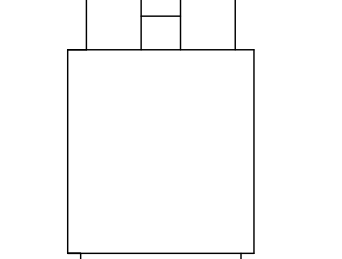
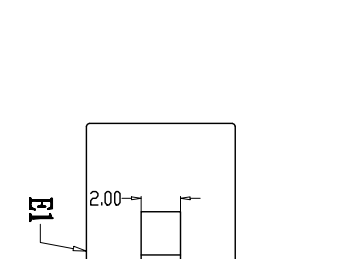
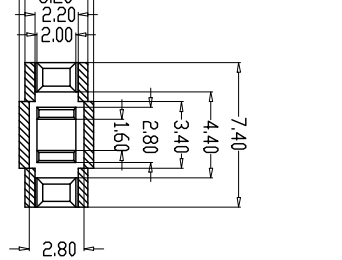


G		Dielectric Strength		PARTS		MATERIALS		TREATMENT		AMOUNT	
Engagement force	≤25N	Rated voltage	>750V	A	HOUSING	PTFE	NATURAL COLOR	1			
Disengagement force	≥5N	Frequency Range	DC to 6 GHz	B	CONTACT	BRASS	GOLD PLATED	1			
Retention	≥110N	Voltage standing wave ratio	<1.30 (DC-3GHz)	C	OUTER CONTACT	BRASS	NICKEL PLATED	1			
Mechanical lifespan	≥500	Insulation resistance	<1.40 (3GHz-6GHz)	D	SHIELD	BRASS	NICKEL PLATED	1			
IP rating	IP67/IP68	Contact resistance	≥1000V/Ω	E	SHELL	PBT+GF	SPECIFY COLOR	1+1			
Operation Temperature	-40° C~105° C	Insertion Loss	≤5mΩ	F							
RF Leakage	≥65 dB		<0.1x√f (GHz) dB								



东莞市昌骏电子有限公司
Dongguan Changjun Electronics Co., Ltd

TITLE: FAKRA公头 线缆直头 (长体) R358

PART NO: CJ-FAKRA-7-402

DRAWING NO.: CJ-FAKRA0002

SHEET: 1 / 1

SCALE: 1 : 1

UNITS: mm

SIZE: A4

REV: A/0

DRAWN: Xie Wenjun

CHECK: Long Jibang

DATE: 2022-01-05