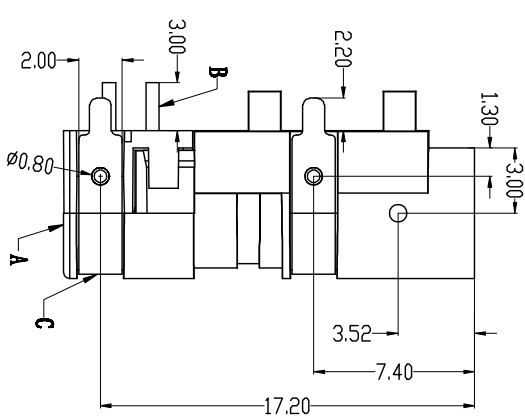
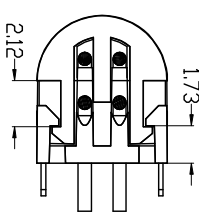
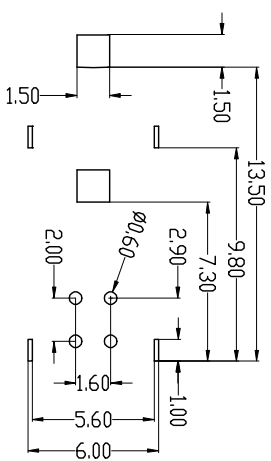
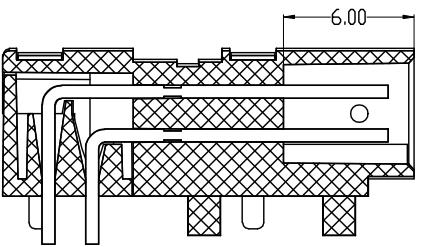
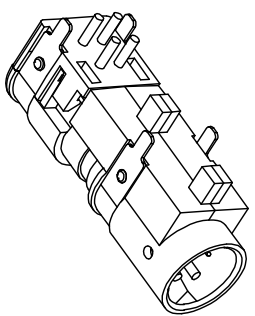
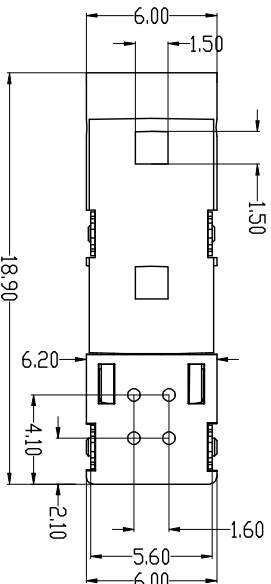
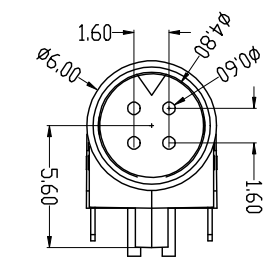


1 2 3 4 6 7 8



PCB Layout Reference

由 Autodesk 教育版产品制作

由 Autodesk 教育版产品制作

| | | | |
|---------------------|----------|-----------------------|--------------|
| Engagement force | ≤38N | Rated voltage | 24V |
| Disengagement force | ≥18N | Rated current | 2A |
| Mechanical lifespan | ≥500 | Insulation resistance | ≥1000MΩ |
| IP rating | | Contact resistance | ≤10mΩ |
| Flammability | UL94 V-0 | Operation Temperature | -25° C~85° C |

| PARTS | MATERIALS | TREATMENT | AMOUNT |
|-----------|-----------|---------------|--------|
| A HOUSING | PA66+GF | BLACK | 1 |
| B CONTACT | BRASS | SILVER PLATED | 4 |
| C SHIELD | BRASS | NICKEL PLATED | 2 |
| D | | | |
| E | | | |
| F | | | |

Dongguan Changjun Electronics Co., Ltd
东莞市昌骏电子有限公司

TITLE: 宝马车公头 板端插头

TOLERANCE: ±0.05, ±0.10, ±0.20, ±0.30, ±0.50, ±1°

PART NO.: CJ-BM4-M11
 DRAFTING NO.: CJ-BM0007

SHEET: 1 / 1
 SCALE: 1 : 1
 UNIT: mm
 SIZE: REV A/0

DRAWN: Xie Wenjun
 CHECKS: Long Jichang
 DATE: 2022-01-05

1 2 3 4 6 7 8